



PROSPECTUS 2026

Table of contents

1	ADVANTAGES OF STUDYING AT WCCC / ACCREDITATION AND REGISTRATION	15-16	NATIONAL CERTIFICATE Animal Production
2	FACILITIES, RECOGNITION OF PRIOR LEARNING	17-18	NATIONAL CERTIFICATE Plant Production NQF LEVEL 3
	MISSION, CORE, VALUE & ASSURANCE	19-20 21	NATIONAL CERTIFICATE Plant Production NQF LEVEL 4
3	CHOOSE YOUR QUALIFICATION	22	INFORMATION TECHNOLOGY
4	ADMISSION REQUIRED	23-24	END USER COMPUTING
5-6	HOW TO APPLY	25-26	FURTHER EDUCATION AND TRAINING CERTIFICATE Technical Support
7	STUDENT SUPPORT AT WCCC TRAINING INSTITUTE	29-30	NATIONAL CERTIFICATE Electronics
8-14	NATIONAL DIPLOMA Specialist Agricultural Machinery Technician	27-28	NATIONAL CERTIFICATE System Support



ADVANTAGES OF STUDYING AT WCCC

When you enroll at WCCC, you meet a creative, innovative, dedicated, and enthusiastic team that is passionate about what they teach and how they serve your study needs.

We train our students to work ethically and to function independently, with perseverance and self-discipline. Thus, enabling them to be recognizable in the workplace. Core functions i.e., conflict management, time management, project team member, etc. forms part of our baseline training to prepare our students for the workplace environment.

When you enroll at WCCC, you can expect to

- grow and learn throughout your studies
- receive an accredited qualification
- have access to distance learning
- have access to full time training at Hygro's facilities
- have access to communal accommodation (space is limited)
- experience a challenging programme that maintains high standards
- enjoy fast, friendly service from academic and administrative staff
- learn from a diverse team of highly qualified educators
- benefit from a thorough programme
- receive practical training

ACCREDITATION AND REGISTRATION

WCCC is an accredited training provider in accordance with AGRISETA and MICTSETA

Accreditation numbers:

- AgriSETA: AGRI /c prov /2457/23
- MICTSETA: ACC/2018/07/501



WCCC
TRAINING
 **INSTITUTE**

1

MISSION, CORE VALUE & ASSURANCE

Our mission is to continue our growth through the delivery of the highest most cost-effective skills development and training, thereby creating employment.

We firmly believe in:

- Creating a job is better than finding one
- Empowerment through education
- Honesty and integrity
- Community development



FACILITIES

WCCC offers communal accommodation, practical training facilities for hydroponic systems, plant production, animal production, poultry production and mixed farming systems. We also offer expert training and guidance from a qualified veterinary doctor and experts in the agricultural sector to ensure the highest quality of training. We also offer distance learning for individuals that prefer to do part time learning

RECOGNITION OF PRIOR LEARNING (RPL)

During your lifetime, you might have acquired various skills, competencies, and experiences. This learning– which may have taken place outside formal education and training– is valuable, regardless of where or when it was obtained. You may have acquired skills or knowledge from a combination of training conducted while at work, experienced gained at work, short courses, or from community work in a relevant field. RPL permits you to gain credits towards a formal certificate or diploma offered by WCCC, based on the level and extent of your knowledge. Your prior learning will be measured against specified prescribed learning outcomes.

*For more information on recognition of prior learning, please
e-mail info@wccchealthfacilities.co.za
admin@wccchealthfacilities.co.za*



WCCC
TRAINING
 **INSTITUTE**



CHOOSE YOUR QUALIFICATION

NATIONAL DIPLOMAS

- Agri sales and service management
- Agricultural extension
- Animal production
- Plant production
- Specialist agricultural machinery technician
- Grain handling management

NATIONAL CERTIFICATES

- Information Technology
- Animal production
- Plant production
- Mixed farming systems
- Grain handling processes
- Horticulture
- Poultry production
- Fruit packing & grading processes
- Electronics

SKILLS PROGRAMMES / SHORT COURSES

- Hydroponic production
- Poultry production
- Management and supervisory skills
- Human resource management
- Financial management
- Business management
- Marketing
- Repairs and maintenance
- Planting
- Harvesting
- Pests, diseases, and weeds
- Irrigation
- Water quality
- Production
- Fertilizer
- Structure and function of a plant
- Plant manipulation
- Plant propagation
- Animal anatomy
- Nature conservation and sustainable farming
- Animal breeding
- Animal nutrition
- Industry analyses
- Harvesting of animal products
- Animal handling and animal health
- Enterprise selection and farm layout
- Determine produce grade: Maize
- Determine produce grade: Sorghum
- Determine produce grade: Sunflower
- Determine produce grade: Wheat
- Combat contamination in grain
- Care of tools, PPE, and electronic measuring instruments
- Fruit packhouse basics
- Fruit packhouse supervisory skills

COMPLIANCE TRAINING

- Provide risk-based emergency care / first aid in the workplace
- Drive a tractor
- Operate a counterbalance lift truck
- Operate a truck mounted crane
- Input and stock / chemical handling
- Water quality and maintain irrigation systems
- Health and safety – maintain, deal, and apply in the workplace
- Maintain occupational safety and general housekeeping
- Operate a chainsaw
- Select, use, and care for power tools
- Perform basic fire fighting
- Apply environmental protection procedures
- Apply hygiene procedures
- Operate brush cutters
- Food safety and quality management systems





ADMISSION REQUIREMENTS

NATIONAL DIPLOMA

A National Senior Certificate (NSC), Matric / Grade 12

OR

A qualification at NQF level 04, and or NQF level 05

OR

Competency acquired through recognition of prior learning

NATIONAL CERTIFICATES

Entry level requirement for NQF level 01:

A candidate must have achieved numeracy, literacy, and communication equivalent to ABET level 03 or grade 07

OR

Entry level requirement for NQF level 02:

A candidate must have achieved numeracy, literacy, and communication equivalent to NQF level 01 or grade 09

OR

Entry level requirement for NQF level 03:

A candidate must have achieved numeracy, literacy, and communication equivalent to NQF level 02 or grade 10

OR

Entry level requirement for NQF level 04:

A candidate must have achieved numeracy, literacy, and communication equivalent to NQF level 03 or grade 12

DO I QUALIFY?

SUBMIT YOUR APPLICATION TO

admin@wccchealthfacilities.co.za

OR

info@wccchealthfacilities.co.za



WCCC
TRAINING
INSTITUTE



HOW TO APPLY

CHOOSING YOUR QUALIFICATION



Once you have decided on the qualification you want, you are ready to apply.

MAKE SURE YOUR APPLICATION IS COMPLETE



If your application for admission to study through WCCC is incomplete, it cannot be considered.

5



WCCC
TRAINING
INSTITUTE

UPLOAD SUPPORTING DOCUMENTS



Everyone applying for a new qualification (first-time applicants or existing students starting a new qualification) must submit the required documents.

WCCC does not provide scanners or electric devices at the regional office, so please ensure that your documents are scanned and uploaded to an electronic device before starting the application process.

Documents must have been certified within the last 3 months before uploading. Uncertified copies that are uploaded will be rejected.

PAY THE REGISTRATION FEE ONCE YOU'VE RECEIVED A STUDENT NUMBER FROM WCCC



Pay the registration fee once you have received a student number and use this number as payment reference.

ACCREDITATION



WCCC offers training that is aligned with the AGRISETA.

6



WCCC
TRAINING
 **INSTITUTE**

STUDENT SUPPORT AT WCCC TRAINING INSTITUTE

WCCC prides itself on its learner support, which includes the following:

OUR STAFF, OUR PRIDE

WCCC is well staffed with committed, passionate administrators, coordinators, facilitators, assessors and moderators.

DISTANCE LEARNING SUPPORT

Should you choose to enroll for a distance learning course, it does not mean you are alone. An accredited facilitator / assessor will be assigned to you to assist with any queries you may encounter throughout your studies.

INTERNATIONAL RECOGNITION

Most of our Diploma and Learnership programmes are internationally recognized in countries.

ONSITE TRAINING

WCCC offers full time learning / onsite training.

Learners receive in class theoretical training and onsite practical learning.

ASSESSMENT CRITERIA

Competency will be determined on a variety of assessment methods:

- Verbal explanations
- Written assessments
- Practical assessments
- Physical demonstration
- Historical evidence

All evidence will be compiled in a Portfolio of Evidence (PoE).

Once training has been completed and assessments marked, the PoE will be submitted to a qualified moderator to moderate the PoE. Upon completion of the moderation process, the PoE will then be submitted to the AgriSETA for verification purposes. Once the AgriSETA verified the PoE, the certificate will be generated and handed over to WCCC for distribution to the learners.



WCCC
TRAINING
 **INSTITUTE**

NATIONAL DIPLOMA

SPECIALISTS AGRICULTURAL MACHINERY TECHNICIAN

Accredited by

AGRISETA (ID:14893)

Duration

2 years

Purpose of Qualification

Purpose:

The purpose of this qualification is to prepare a learner to fabricate metal parts, fit, assemble, maintain and repair mechanical components, sub-assemblies and machines. A qualified learner will be able to:

- Apply hand skills to fabricate mechanical components using engineering tools.
- Perform engineering maintenance on mechanical components, subassemblies and machines.
- Repair, install and commission subassemblies and machines.
- Machine mechanical components using machining tools and equipment.



WCCC
TRAINING
INSTITUTE

8

NATIONAL DIPLOMA

SPECIALISTS AGRICULTURAL
MACHINERY TECHNICIAN



Purpose of Qualification

Rationale:

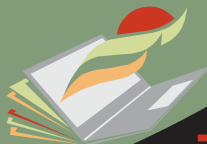
The field of engineering fitting is characterized by the provision of engineering maintenance, repair and installation services and support in a variety of industries. The equipment requiring such service and support ranges from sophisticated equipment to antiquated single station machines. People working in the mechanical engineering field require specialized technical skills and knowledge, as well as highly developed hand skills in order to meet the mechanical engineering requirements of diverse industries.

The field of engineering machining is characterized by work-to-order, low volume manufacture of components using different machining methods for use in a variety of industries. People working in the engineering machining field require specialize technical skills and knowledge, as well as highly developed hand skills in order to adapt to and meet the requirements of the constantly changing products that must be manufactured.

The primary focus of this qualification is to develop the ability to produce components of some complexity using a variety of machining methods and the ability to fault find, dismantle, maintain, repair and install complex mechanical assemblies and diagnose and repair equipment and machinery during production/operation. Hand skills play a large role in this qualification.

Qualifying learners will be able to maintain and support the various policies and procedures related to the safety, health, environment and quality systems that govern their workplace.

Vertical progression opportunities are commonly related to supervisory or foreman positions that do not require further formal qualifications related to fitting and turning.



WCCC
TRAINING
 **INSTITUTE**

NATIONAL DIPLOMA

SPECIALISTS AGRICULTURAL MACHINERY TECHNICIAN

Qualification Rules

This qualification is made up of the following compulsory Knowledge and Practical Skill Modules:

Knowledge Modules:

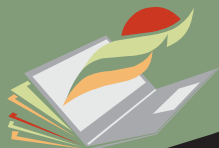
- Basic engineering theory, NQF Level 3, 32 Credits.
 - Fitting Theory, NQF Level 4, 38 Credits.
 - Machining Theory, NQF Level 4, 36 Credits.
- Total number of credits for Knowledge Modules: 106 Credits

Practical Skill Modules:

- Fabricate simple components or work pieces using basic hand skills and hand tools, NQF Level 2, 6 Credits.
- Fabricate components or work pieces using power tools or machinery, NQF Level 3, 6 Credits.
- Disassemble, clean and inspect mechanical sub-assemblies, NQF Level 3, 6 Credits.
- Replace components and assemble mechanical sub-assemblies and machines, NQF Level 3, 6 Credits.
- Do fault finding on mechanical sub-assemblies and machines, NQF Level 4, 12 Credits.
- Repair mechanical sub-assemblies and machines, NQF Level 4, 12 Credits.
- Install and commission mechanical sub-assemblies and machines, NQF Level 4, 12 Credits.
- Overhaul mechanical sub-assemblies and machines, NQF Level 4, 20 Credits.
- Produce simple components by setting up and attending to the operation an engineering machine, NQF Level 2, 6 Credits.
- Produce components of intermediate complexity by performing engineering machining operations, NQF Level 3, 12 Credits.
- Perform complex machining operations, NQF Level 4, 24 Credits.

Total number of credits for Practical Skills Modules: 122 Credits.

10



WCCC
TRAINING
 **INSTITUTE**

NATIONAL DIPLOMA



Pneumatic Planter
6 Rows



Pneumatic
Planter, 4 Rows



Pneumatic
Ridge Planter,
4 & 6 Rows

Qualification Rules

This qualification also requires the following compulsory Work Experience Modules:

- Fabrication processes in an engineering workshop, NQF Level 2, 20 Credits.
- Routine mechanical component and machine maintenance processes, NQF Level 3, 40 Credits.
- Maintenance planning and communication processes, NQF Level 3, 10 Credits.
- Repair mechanical faults on mechanical sub-assemblies and machines, NQF Level 4, 60 Credits.
- Overhauling processes in an engineering workshop, NQF Level 4, 60 Credits.
- Structured planning and communication processes in the workplace, NQF Level 4, 60 Credits.
- Machining processes to design specifications of a range of work pieces from different materials, NQF Level 4, 60 Credits.
- Engineering workshop control processes, NQF Level 4, 10 Credits.

Total number of credits for Work Experience Modules: 320 Credits.

SPECIALISTS AGRICULTURAL MACHINERY TECHNICIAN

Spray Machines



Boom Sprayer

Blower
Sprayer

11

Walk-Behind
Power Spray

WCCC
TRAINING
INSTITUTE

SPECIALISTS AGRICULTURAL MACHINERY TECHNICIAN

Exit Level Outcomes

1. Apply hand skills to fabricate mechanical components using engineering tools.
2. Perform engineering maintenance on mechanical components, subassemblies and machines.
3. Repair, install and commission subassemblies and machines.
4. Machine mechanical components using machining tools and equipment.

Occupation Regulation

All trades are regulated by the Department of Higher Education and Training (DHET) through the National Artisan Moderation Body (NAMB). To become a qualified artisan you have to pass a trade test at a national trade test centre that is accredited by the Quality Council for Trades and Occupations (QCTO). All national trade test centres are quality assured and recommended for accreditation by the NAMB.

Entry Requirements:

Recognition of Prior Learning (RPL):

RPL for access to the integrated assessment:
Accredited providers and approved workplaces must apply the internal assessment criteria specified in the related curriculum document to establish and conform prior learning. Prior learning must be acknowledged by a statement of results.

RPL for entry requirements to access the qualification:

Accredited providers and approved workplaces may recognise prior learning against the relevant access requirements.

Entry Requirements:

- NQF Level 1 with Mathematics and Science.



SPECIALISTS AGRICULTURAL MACHINERY TECHNICIAN

Articulation Options

This qualification articulates with qualifications (currently under development) within the mechanical trades related to the following occupations:

The qualification articulates horizontally with the following, at NQF Level 4:

- Automotive Machinist.
- Metal Machinist.

The qualification articulates vertically with the following at NQF Level 5:

- Engineering Studies N4, NQF Level 5.

Assessment Requirements

Integrated Formative Assessment:

The skills development provider will use the curriculum to guide them on the stipulated internal assessment criteria and weighting. They will also apply the scope of practical skills and applied knowledge as stipulated by the internal assessment criteria. This formative assessment leads to entrance into the integrated external summative assessment.

Integrated Summative Assessment:

An external integrated summative assessment, conducted through the relevant QCTO Assessment Quality partner is required for the issuing of this qualification. The external integrated summative assessment will focus on the exit level outcomes and associated assessment criteria. The external assessment model requires that the external assessment will be conducted through a combination of a written assessment and practical task at an accredited trade test centre. The written examination will be concluded at an accredited trade test centre and marked by registered assessors. Practical tasks will also be assessed by registered assessors. The combination of the written and practical assessment will be conducted over a period of two working days.





Provider Accreditation Requirements For The Module:

Physical Requirements:

Recourses to deliver the trade theory

- Access to a fully equipped training venue

Human Resource Requirements:

- Access to a facility that is conducive for class room learning
- A learner facilitator ration of not more than 1:20
- Facilitators must be suitably qualified in the delivery of occupational training programs
- Facilitators must be a qualified artisan with at least 3 years work experience as a artisan

Legal Requirements:

- Compliance with OHS Act
- Compliant with the Fire Brigade Services Act.

Critical Topics to be Assessed Externally for the Knowledge Module

No topics are required to be re-assessed externally

Exemptions

None

NATIONAL CERTIFICATE : ANIMAL PRODUCTION

NQF LEVEL 03 QUALIFICATION CODE - 49048

INTRODUCTION TO THE PROGRAM

This qualification is registered at level 03 on the National Qualifications Framework.

This qualification provides learners the opportunity to gain a qualification in Animal Production.

A learner assessed as competent against this qualification will have the necessary competence to supervise and lead a working team performing the agricultural processes as applicable to animal husbandry. Furthermore, the learner will be able to take responsible decisions based on a sound understanding of the basic principles of agri-business and good agricultural practices, in meeting the set objectives and targets within the broader farm plan which includes the economical application of general resources, agricultural production and technical knowledge and skills. The learner will also be able to adhere to and implement according to the level of supervision as well as the relevant quality, safety, and hygiene standards as applicable within the industry.

In addition, they will be well positioned to extend their learning and practice into other areas of agricultural commodities within a context of either agronomy, or horticulture as applicable to the agricultural commodity, or to strive towards agricultural management standards and practise at higher levels.

Competent qualifying learners in this qualification will oversee the production of quality agricultural products whereby enhancing the overall agricultural process and gain opportunities to access local, national, and international agricultural markets.

This qualification provides learners the opportunity to gain a qualification in Animal Production. The range of typical learners that will enter this qualification will vary and includes:

- Farm operators who wish to progress to the level of supervisor within farming operations in Animal Husbandry.
- Farm owners, in possession of an equivalent qualification at NQF 2.
- Learners in possession of different levels of practical experience in farming operations, which will be assessed and RPL'ed;
- Possible candidates for promotion identifying the community as leaders.
- Learners may come from both genders.

The learner will engage in supervision and operational activities relevant to Animal Production.

Requests and expressions of need for this qualification, coming from the broad, but also specific farming communities (Animal Husbandry) forms the basis for the development of this qualification.

This qualification will form the basis for learners to extend their learning into more specialized areas of animal production and provides the basis of the establishment of sustainable farming operations through the inclusion of a wide spectrum of competencies required by farmers in South Africa. Whilst technical production orientated competencies are ensured, other aspects such as agri-business and good agricultural practices are included in the range of competencies required by farmers to enable them to strive towards agricultural management standards and practises at higher levels.

DO I QUALIFY?



15

WCCC
TRAINING
 **INSTITUTE**

To be enrolled to this qualification, a candidate must have achieved numeracy, literacy and communication equivalent to NQF level 02 or grade 10.

Submit your application to our training department to determine if you qualify to enroll for this qualification. Email on info@wccchealthfacilities.co.za

WHAT WILL I LEARN?

The learner will have demonstrated ability to make decisions and provide management guidelines considering a range of options or completion of the following unit standards in these specified areas:

FUNDAMENTAL:

- Accommodate audience and context needs in oral communication
- Demonstrate an understanding of the use of different number bases and measurement units and an awareness of error in the context of relevant calculations
- Describe, apply, analyze, and calculate shape and motion in 2- and 3-dimensional space in different contexts
- Incorporate basic concepts of sustainable farming systems into practical farm activities
- Interpret and use information from texts
- Investigate life and work-related problems using data and probabilities
- Supervise the collection of agricultural data
- Use language and communication in occupational learning programmes
- Use mathematics to investigate and monitor the financial aspects of personal, business, and national issues
- Write texts for a range of communication contexts

CORE:

- Apply crop protection and animal health products effectively and responsibly
- Apply advanced breeding practices for farm animals
- Apply routine maintenance and servicing plans and procedures
- Assist in farm planning and layout for conservation and air/water harvesting
- Explain animal anatomy and physiology
- Explain application of marketing principles within an alternate and dynamic agricultural marketing environment
- Explain costing and the viability of an agri-business
- Explain elementary animal nutrition
- Explain human resource policies and procedures
- Explain store inputs categories, labelling and storage methods
- Explain the harvesting of animal products
- Explain the planning and scheduling of tasks in a production environment
- Explain the prevention and treatment of animal diseases
- Interpret factors influencing agricultural enterprises and plan accordingly
- Maintain water quality parameters
- Minimize risk in animal management
- Monitor and supervise a food safety and quality management system in the agricultural supply chain

DURATION:

A complete training program will be available prior to implementation.
The duration of the training will be over a period of 1 year.



NATIONAL CERTIFICATE : PLANT PRODUCTION

NQF LEVEL 03 QUALIFICATION CODE 49052

INTRODUCTION TO THE PROGRAM

This qualification is registered at level 3 on the National Qualifications Framework.

A learner assessed as competent against this qualification will have the necessary competence to supervise and lead a working team performing the agricultural processes as applicable to plant husbandry. Furthermore, the learner will be able to take responsible decisions based on a sound understanding of the basic principles of agri-business and good agricultural practices, in meeting the set objectives and targets within the broader farm plan which includes the economical application of general resources, agricultural production and technical knowledge and skills. The learner will also be able to adhere to and implement according to the level of supervision as well as the relevant quality, safety, and hygiene standards as applicable within the industry.

In addition, they will be well positioned to extend their learning and practise it to other areas of agricultural commodities within a context of either agronomy, or horticulture as applicable to the agricultural commodity, or to strive towards agricultural management standards and practice at higher levels.

Competent qualifying learners in this qualification will oversee the production of quality agricultural products whereby enhancing the overall agricultural process and gain opportunities of access to local, national, and international agricultural markets.

This qualification provides learners the opportunity to gain a qualification in Plant Production

The range of typical learners that will enter this qualification will vary and includes:

- Farm operators who wish to progress to the level of supervisor within farming operations in Plant Production,
- Learners in possession of different levels of practical experience in farming operations which will be assessed and RPL'ed;
- Possible candidates for promotion in the community as leaders.
- Learners may come from both genders.

The learner will engage in supervision and operational activities relevant to Plant Production

Requests and expressions of need for this qualification, coming from the broad, but also specific farming communities (Plant Production) forms the basis for the development of this qualification

This qualification will form the basis for learners to extend their learning into more specialized areas of plant production and provides the basis of the establishment of sustainable farming operations through the inclusion of a wide spectrum of competencies required by farmers in South Africa. Whilst technical production oriented competencies are ensured, other aspects such as agri-business and good agricultural practices are included in the range of competencies required by farmers to enable them to strive towards agricultural management standards and practices at higher levels.



DO I QUALIFY?

To be enrolled to this qualification, a candidate must have achieved numeracy, literacy and communication equivalent to NQF level 02 and technical skills pertaining to agricultural activities equivalent to NQF level 2, or grade 10.

Submit your application to our training department to determine if you qualify to enroll for this qualification. Email o info@wccchealthfacilities.co.za

WHAT WILL I LEARN?

The learner will have demonstrated ability to make decisions and provide management guidelines considering a range of options after completion of the following unit standards in these specified areas:

FUNDAMENTAL:

- Accommodate audience and context needs in oral communication
- Demonstrate an understanding of the use of different number bases and measurement units and an awareness of error in the context of relevant calculations
- Describe, apply, analyze, and calculate shape and motion in 2 -and 3-dimensional space in different contexts
- Incorporate basic concepts of sustainable farming systems into practical farm activities
- Interpret and use information from texts
- Investigate life and work-related problems using data and probabilities
- Supervise the collection of agricultural data
- Use language and communication in occupational learning programmes
- Use mathematics to investigate and monitor the financial aspects of personal, business, and national issues
- Write texts for a range of communication contexts

CORE:

- Apply crop protection and animal health products effectively and responsibly
- Apply routine maintenance and servicing plans and procedures
- Assist in farm planning and layout for conservation and air/water harvesting
- Demonstrate a basic understanding of the physiological functioning of the anatomical structures of the plant
- Explain application of marketing principles within an alternative and dynamic agricultural marketing environment
- Explain costing and the viability of an agri-business
- Explain human resource policies and procedures
- Explain store inputs categories, labelling and storage methods
- Explain the planning and scheduling of tasks in a production environment
- Explain the propagation of plants
- Interpret factors influencing agricultural enterprises and plan accordingly
- Maintain water quality parameters
- Manage soil fertility and plant nutrition
- Monitor and co-ordinate the harvesting of agricultural products
- Monitor and supervise a food safety and quality management system in the agricultural supply chain
- Monitor natural resource management practices

DURATION:

A complete training program will be available prior to implementation.
The duration of the training will be over a period of 1 year.



NATIONAL CERTIFICATE : PLANT PRODUCTION

NQF LEVEL 04 QUALIFICATION CODE - 49009

INTRODUCTION TO THE PROGRAM

This qualification is registered at level 4 on the National Qualification Framework.

The purpose of this qualification is to allow Supervisors to progress towards a Junior Farm Manager position with specific reference to Plant Production. The contextualized purpose and usage of the qualification is as follows:

- A learner assessed against this qualification will have the necessary competence to manage Supervisors and working teams, performing the agricultural processes as applicable to Plant production in a range of Plant Production taking responsibility for the quality outputs.
- The Learner will be able to take complete responsibility for her/his own actions and take responsibility for supervising others at lower levels within a Plant Production context under broad guidance and evaluation.
- Competency will be gained in any of the specialized sub-fields of Plant Production as specified under areas of specialization (i.e. vegetables, Fruit Production, Hydroponics, etc.) with a strong focus on management.
- The learner will be able to take responsible decisions within a wide range based on a sound understanding of the basic principles of agri-business and good agricultural practices, in meeting the set objectives and targets within the broader farm plan which includes the economical application of general resources, agricultural production and technical knowledge and skills, all in a Plant Production context.
- The Learner will be able to oversee the implementation of a wide range of procedures and will be able to ensure the relevant safety, quality, hygiene, and technical standards as applicable within the industry.
- In addition to the above, the learner will be well positioned to extend learning and practise to other sub-fields such as Plant Production and Mixed Farming, since such efforts will only require additional learning within the elective scope of other qualifications at this level.
- The learner will be well positioned to progress towards higher levels of Management and Technical production practices as defined by qualifications at the next level.
- Learners will be enabled to actively participate in the Primary Agricultural Sector through the production of quality agricultural products, enhancing the overall agricultural process and gain opportunities to access local, national, and international agricultural markets.
- This qualification will allow qualifying learners to become economically active in farming practices that will have a direct impact on Local Economic Development through the production of food, the improvement of household food security and access to mainstream agriculture.
- Finally, learners will be able to guide and direct others in terms of the planning, implementation, and control of development projects within a Plant Production context.

This qualification provides learners the opportunity to gain a qualification in Plant Production.

The range of typical learners that will enter this qualification will vary and includes:

- Farm operators who wish to progress to the level of junior farm manager,
- Learners in possession of different levels of practical experience in farming operations, which will be assessed and RPL'ed,



- School leavers (Gr. 12) from agricultural schools,
- Learners may come from both genders.

The learner will engage in farm management and operational activities relevant to Plant Production.

Requests and expressions of need for this qualification, coming from the broad, but also specific farming communities (Plant Production) forms the basis for the development of this qualification.

This qualification will form the basis for learners to extend their learning into more specialized areas of plant production and provides the basis of the establishment of sustainable farming operation though the inclusion of a wide spectrum of competencies required by farmers in South Africa. Whilst technical production oriented competencies are ensured, other aspects such as agri-business and good agricultural practices are included in the range of competencies required by farmers to enable them to strive towards agricultural management standards and practises at higher levels.

DO I QUALIFY?

To be enrolled to this qualification, a candidate must have achieved numeracy, literacy and communication equivalent to NQF level 02 and technical skills pertaining to agricultural activities equivalent to NQF level 3, or grade 12.

Submit your application to our training department to determine if you qualify to enroll for this qualification. Email o info@wccchealthfacilities.co.za

WHAT WILL I LEARN?

The learner will have demonstrated ability to make decisions and provide management guidelines considering a range of options after completion of the following unit standards in these specified areas:

FUNDAMENTAL:

- Accommodate audience and context needs in oral communication
- Interpret a variety of literary texts
- Interpret and use information texts
- Write texts for a range of communicative contexts
- Apply knowledge of statistics and probability to critically interrogate and effectively communicate findings on life related problems
- Engage in sustained oral communication and evaluate spoken texts
- Implement a data collection plan
- Measure, estimate, and calculate physical quantities and explore, critique, and prove geometrical relationships in 2- and 3-dimensional space in life and workplace of adult with increasing responsibilities
- Plan and maintain environmentally sound agricultural processes
- Read, analyze, and respond to a variety of texts
- Use language and communication in occupational learning programmes
- Use mathematics to investigate and monitor the financial aspects of personal, business, national and international issues
- Write for a wide range of contexts



CORE:

- Apply effective and integrated pest, disease, and weed control
- Assume co-responsibility and participation in human resource management
- Demonstrate a basic understanding of the physiological processes in plant growth and development
- Develop a harvesting plan for the specific agricultural crop
- Establish a plan for the monitoring, safe use, and maintenance of equipment implements, technology, and infrastructure
- Evaluate, adjust, and implement factors influencing agricultural enterprises
- Execute sustainable resource use and quality control
- Give an overview of the industry structure
- Implement a food safety and quality management system in the agricultural supply chain
- Implement a natural resource management plan
- Implement integrated farm layout and site selection
- Implement soil fertility and plant nutrition practices
- Manage plant manipulation methods of an agricultural crop
- Manage water quality parameters
- Participate in the development and management of an agribusiness plan
- Participate in the development and management of an agricultural marketing plan
- Prepare a whole farm budget and establish a proper integrated information system for an agribusiness
- Procure and manage agricultural input
- Propagate plants in a variety of situations
- Schedule the operation and maintenance of irrigation systems

ELECTIVES:

- Implement a permaculture site design
- Manage agricultural export logistics
- Produce crop in a hydroponic system

DURATION:

A complete training program will be available prior to implementation. The duration of the training will be over a period of 1 year.



INFORMATION TECHNOLOGY

Qualifications

National Certificate:

Information Technology: End User Computing

Further Education and Training Certificate:

Information Technology: Technical Support

National Certificate:

Information Technology: Systems Support

National Certificate: Electronics



End User Computing

Purpose of Qualification

The purpose of this qualification is to empower students to acquire knowledge, skills, attitudes and values required to operate confidently in the End User Computing environment in the South African community and to respond to the challenges of the economic environment. The National Certificate: End User Computing at NQF L level 3 is intended for students already employed or new students entering the workplace requiring End User Computing skills. The unit standards of this qualification may be added to other industry qualifications to provide an End User Computing focus with comparison, choice, interpretation and the application of knowledge.

Career Focus

Secretary
Project Administrator
Data Capturer
Office Administrator
Any Administrative Job in an IT or Business Environment

Accredited by

MICTSETA (ID: 49077)

Admission requirements

NQF 2 or an equivalent qualification

Duration

One year



End User Computing

Articulation options

The qualification at this level is foundational and generic, allowing maximum mobility between qualifications. Apart from the workplace needs the qualification will address, it is also designed as an entry qualification into most further education and training fields, because of the wide application of End User Computing in any environment.

Assessment of Programme

Assessment is conducted as both a Formative Assessment and a Summative Assessment. The Formative Assessment is covered as continuous assessment tests and compilation of a Portfolio of Evidence by the student. The Summative Assessment takes place as a national summative exam for first and second semesters. It is compulsory for all students to complete work integrated learning for completion of the programme.

Course Structure

- Communication Fundamentals
- Numeracy Fundamentals
- Information Communication Technology
- Microsoft Word
- Microsoft Excel
- Microsoft PowerPoint
- Microsoft Access
- Internet and Email
- Project Management

Total Credits: **130**

24

Further Education And Training Certificate

Technical Support

Purpose of Qualification

The purpose of this qualification is to build a foundational entry into the field of Computer Sciences and Information Technology, specifically into the field of Systems Support, covering basic knowledge needed for further study in the field of Systems Support at Higher Education levels.

Career Focus

Computer Technician
Network Administrator
Hardware Technician
Help Desk Support
Laboratory Technician
Call Centre Support
Data Centre Administrator
Network Engineer
Support Team Leader

Accredited by

MICTSETA (ID: 78964)

Admission requirements

Grade 11 or an equivalent qualification
NQF 3 with English and Mathematics

Duration

One year



25

Further Education And Training Certificate

Technical Support

Articulation options

This qualification has been designed to allow entry into either the National Certificate in Systems Support at NQF Level 5 or the National Certificate in Systems Development at NQF Level 5, but can also be used as foundational to other IT qualifications that will be defined in future.

Assessment of Programme

Assessment is conducted as both a Formative Assessment and a Summative Assessment. The Formative Assessment is covered as continuous assessment tests and compilation of a Portfolio of Evidence by the student. The Summative Assessment takes place as a national summative exam for first and second semesters. It is compulsory for all students to complete work integrated learning for completion of the programme

Course Structure

- Communication First Language
- Hardware Volume 1
- Hardware Volume 2
- Mathematics
- Communication Second Language
- Web Application
- Basics of Networks
- (Elective 1) PC Engineering
- (Elective 2) Data Communication and Networking

Total Credits: **163**

26

National Certificate

System Support

Purpose of Qualification

The purpose of this qualification is to enhance readiness and provide entry into the areas of Systems Support at NQF 5. It prepares students for entry into the workplace or as an undergraduate study in Systems Development areas covered, providing them with the necessary knowledge needed for further study in the fields of Information Technology and Computer Sciences.

Career Focus

- Computer Technician
- Network Administrator
- Hardware Technician
- Call Centre Support
- Data Centre Administrator
- Electronic Data Warehousing
- Systems Team Leader
- Systems Administrator
- Junior ICT Manager

Accredited by

MICTSETA (ID: 48573)

Admission requirements

New National Senior Certificate (NSC) that allows entry to the Higher Education Certificate Diploma or Bachelor's Degree OR equivalent NQF Level 4 qualification

Duration

One year

National Certificate

System Support

Articulation options

This qualification was developed to allow for further study in Information Technology and related fields at Higher Education levels. It will allow the qualified student to progress to further qualifications either in Systems Support or other IT domains, or in related industries where IT is a key component. In particular, this qualification has been designed to allow entry into the National Diploma in Systems Support at NQF Level 5 and into current tertiary qualifications at National Diploma level.

Assessment of Programme

Assessment is conducted as both a Formative Assessment and a Summative Assessment. The Formative Assessment is covered as continuous assessment tests and compilation of a Portfolio of Evidence by the student. The Summative Assessment takes place as a national summative exam for first and second semesters. It is compulsory for all students to complete work integrated learning for completion of the programme

Course Structure

- Personal Development
- Network Architecture and Standards
- Enterprise Systems Management
- Designing a LAN for a Departmental Office
- Managing LANS and understanding WANS
- Assembling, Repairing and Maintaining a Server
- Monitor, Maintain and Test Systems
- Instal, Administer and Commission a LAN

Total Credits: **147**

National Certificate

Electronics

Purpose of Qualification

This qualification intends to set standards for a typical learner entering the field of electronics. It will provide learners with foundational, basic knowledge and experiential skills to be able to perform in the electronics field. It will be valuable to potential learners who may have been working or practicing within the electronics field such as electronics artisans, shopfloor workers working within the electronics environment who do not have formal education in electronics and any person wishing to join the electronics field thus providing them with the opportunity for formal recognition of their skills and knowledge through Recognition of Prior Learning.

The qualification is structured in such a way that it enables learners to gain progression towards the higher NQF levels thus creating career opportunities for learners within the electronics environment. The unit standards contained in this qualification will provide building blocks for specific skills that provide access to related qualifications in this field as well as providing articulation possibilities. This qualification is the first in the learning pathway for electronics and articulates vertically to the planned Level 4, FETC: Electronics, National Certificate: Electronics, NQF Level 5 and a National Diploma: Electronics at NQF Level 5. The qualification also provides horizontal articulation to electronics related qualifications within the telecommunications and electronics servicing industries at NQF Level 3.

Accredited by

MICTSETA (ID: 59569)

Admission requirements

Communication, NQF Level 2.
Mathematics, NQF level 2.
Computer Literacy, NQF Level 2

Duration

One year



National Certificate

Electronics

Career Focus

Electronics is a specialized field that requires specific knowledge and skills to be able to operate productively within the sector. People working within the production and operation lines such as assemblers need this qualification to be able to operate effectively within the parameters of legislative and regulatory frameworks governing this sector. It will provide learners with the relevant knowledge, skills, values, and attitudes to be able to operate in this sector. Currently there is no targeted electronics qualification existing at an introductory level that will develop key competencies (knowledge, skills, attitudes, and values) required in the sector. It seeks to provide people working in the sector and those wishing to join the sector with a relevant qualification fitting for the job.

It will benefit individuals at work, as it is mostly occupational-oriented thus providing learners with knowledge and skills to enable them to meet global electronics standards at an introductory level. This qualification will facilitate articulation to other qualifications which include mechatronics, autotronics and electronic warfare thus facilitating mobility, personal growth within the electronics field and improve productivity. Learners will have a working understanding of elementary principles within the electronics sector

Total Credits: **120**

30



Contact



WCCC
TRAINING
INSTITUTE

Training department

info@wccchealthfacilities.co.za
admin@wccchealthfacilities.co.za
+27 68 508 2751

117 Ventersdorp Road
Brandvlei, Randfontein
1759
South Africa

www.wccchealthfacilities.co.za

